



K.E.C. HORTICULTURE





K.E.C. HORTICULTURE

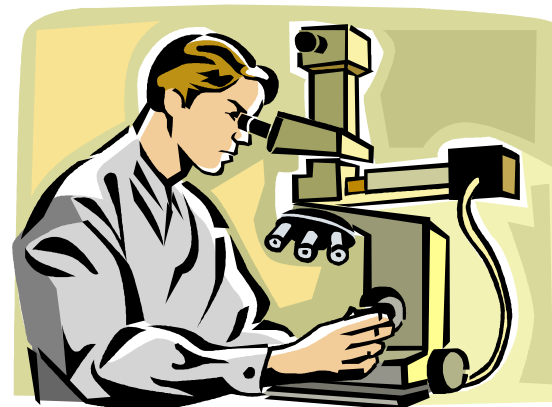
**The seeds are selected, developed, improved
and bred to be high in purity, yield and
quality, widely suitable for shipment, with
long shelf life and highly resistant.**





K.E.C. HORTICULTURE

During research and development in our own highly equipped laboratory, the seeds go through highly demanding quality test procedures, and by the final stages they are tested in top institutions in Holland.





K.E.C. HORTICULTURE

The leading varieties are:



Tomato for greenhouse and open field,

Cherry tomato, Cucumber, Watermelon,

Melon, Sweet and hot pepper and so forth.

They are mostly hybrid types.





K.E.C. HORTICULTURE

**The company has established itself as
a reliable and promising company.**

**We gained helpful experience and a
nice circle of satisfied customers.**





K.E.C. HORTICULTURE



Cherry Tomato



Tomato- Indeterminate



Tomato- Determinate



Sweet Pepper



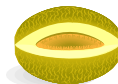
Mini Pepper



Hot Pepper



Cucumber



Melon



Watermelon- Seedless



Watermelon- Seeded



Watermelon- Mini



Eggplant



Lettuce



Cabbage



K.E.C. HORTICULTURE



Cherry Tomato

**Round Cherry tomato and Grape
Cherry tomato – indeterminate hybrid
For greenhouse, net house and open
Field, our varieties excellent in
taste and nice color.**





K.E.C. HORTICULTURE



Cherry Tomato

We produce Grape Cherry varieties
With different weight:
small tomato 15-20 gr
And bigger 20-30 gr





K.E.C. HORTICULTURE

Tomato - Indeterminate

Our indeterminate hybrid tomatoes are Expressly productive, firm and have a bright red color. The long Shelf life Ensures high quality during prolonged Storage.

Our leading varieties:



Regular



Beef



Roma



Cluster





K.E.C. HORTICULTURE

Tomato - Determinate

**Hybrid tomatoes for
Out door production**

Our leading varieties:

T-74

D 230

GM 2000

GM12





K.E.C. HORTICULTURE

Sweet Pepper

KEC-horticulture advanced Sweet Pepper Seeds are available in types: Lamuyo, Blocky and Mini, with high Quality fruits. Wide varieties of color: Red, Dark Green, Green, Light Green, Orange, Gold, Yellow and Light Yellow, With delicious taste, high yield, disease Resistance and long shelf life.



K.E.C. HORTICULTURE



Mini Pepper



K.E.C. HORTICULTURE



Hot Pepper





K.E.C. HORTICULTURE

Cucumber





K.E.C. HORTICULTURE

Cucumber Gherkin 18-2041

Parthenocarpic German type variety. Well branching and medium vigorous plants. Has small leaves enable better ventilation which result less spraying and longer cultivation period.



Variety is multipistilled and has shorter internodes. Leaves are dark green. Fruits are spined and dark green. It is an early variety with high yield. L/D: 3,1:1 and fruits keep that ratio even on longer sizes. Variety is suitable for vertical and flat cultivation. Suitable for indoor and outdoor production. Very high yield

Comparison Karaoke, Kybria (RZ), Vertina (Nu)





K.E.C. HORTICULTURE

Cucumber Gherkin 18-9071



Parthenocarpic German type variety. Well branching and medium vigorous plants. Small leaves enable better ventilation which needs less spraying and longer cultivation period.

Variety is multipistilled and has shorter internodes. Leaves are dark green.

Fruits are spined and dark green. It is an early variety with high yield. L/D: 3,1:1 and fruits keep that ratio even on longer sizes.

Variety is suitable for vertical and flat cultivation.

Suitable for indoor and outdoor production. Very high yield

Difference with 1402 is slightly higher Pcu tolerance and Dark fruit color

Comparison Karaoke, Kybria(RZ) , Vertina, (Nu)





K.E.C. HORTICULTURE

Cucumber 18-2095



Comparison: RS 189

High Resistance: Ccu

Intermediate Resistance: CMV/Px (exSf)

Single pistilled (1-2 fruit per node),
Adapted for cold conditions,
Strong vigor. Good performance in over
winter productions
Small leaves, good setting under cold
conditions and good fruit growth in cold,
Very high fruit quality, slightly ribbed
fruits, medium dark green fruits, very
long fruit stem
High Yield





K.E.C. HORTICULTURE

Cucumber 18-2105



Comparison: RS 189

High Resistance: Ccu

Intermediate Resistance: CMV/Px (exSf)

Single pistilled (1-2 fruit per node),
Adapted for cold conditions,
Strong vigor. Good performance in over
winter productions
Small leaves, good setting under cold
conditions and good fruit growth in cold,
Very high fruit quality, slightly ribbed
fruits, medium dark green fruits, very
long fruit stem
High Yield





K.E.C. HORTICULTURE

Cucumber 18-2115



Comparison: Melen EZ

High Resistance: Ccu/Px ((exSf)

Intermediate Resistance: CMV/Pcu

Semi pistilled (2 fruits per nodes),
adapted for fall, spring. Prefers warmer
start than 212

Long and straight fruits, 16-18 cm,
produced mainly at the main stem
Prefers good growing conditions

Small leaves to increase plant health
Strong compact plant, blind sideshoots
(stops after 2 internodes),

Very high fruit quality, slightly ribbed
fruits, medium dark green fruits, very
long distinguished fruit stem

High Yield



K.E.C. HORTICULTURE



Cucumber 18-2125



Comparison: Melen EZ

High Resistance: Ccu/Px ((exSf)

Intermediate Resistance: CMV/Pcu

Semi pistilled(2 fruits per nodes), adapted for indoor late fall and spring cultivations, Also possible in mild winters

Fruit length 18-20 cm,

Small leaves to increase plant health, Short internodes, blind sideshoot after 2 internodes,

Strong against DM

Cold tolerant, starting early spring

Very high fruit quality, slightly ribbed , medium dark green fruits, very long distinguished fruit stem

High Yield





K.E.C. HORTICULTURE

Cucumber 18-6105



Comparison: Khassib RZ

High Resistance: Ccu/Px ((exSf)

Intermediate Resistance: CMV/Pcu
CVYV,ZYMV not tested

Multi pistilled(3-5 fruits per nodes),
adapted for indoor spring,summer, autumn
cultivations,

Fruit length 16-18 cm,

Small leaves to increase plant health,

Short internodes, blind sideshoot after 2
internodes,

Strong against DM

Heat tolerant

High fruit quality, slightly ribbed , medium
dark green fruits, very long distinguished
fruit stem

Very vigorous. High Yield

